

**eila.**

MOBILE EVENTLOCATIONS // ROADSHOW



# COLLECTION

RENTAL PARK



COLLECTION

eila.

Sebastian Eiselt // CEO

WELCOME

Find the perfect hospitality for your event! We're renting hospitalities in different sizes for every requirement. Almost every hospitality can be customized to fit your needs. Feel free to ask us for further information or an individual offer!

WE SIMPLY LOVE WHAT WE DO.

TO THE world of eila

Whether hospitality or roadshow unit: Our rental park offers you various models in a wide range of sizes and price categories. In our eila collection we present our ideas for tomorrow and the future of mobility. Immerse yourself in our versatile product worlds and discover the whole universe of possibilities.

[Rental Park overview >>](#)



**PROMO TOURER LIGHT 3.5** / 14

1 - 6 People

9 m<sup>2</sup>



**PROMO TOURER 3.5** / 18

1 - 12 People

15 m<sup>2</sup>



**SMART SPACE 3.5** / 22

1 - 100 People

23 m<sup>2</sup> - 33 m<sup>2</sup>



**EXPANDABLE CONTAINER** / 40

5 - 15 People

32 m<sup>2</sup>



**GLASS CUBE** / 44

10 - 40 People

72 m<sup>2</sup>



**EXPANDABLE SINGLE** / 26

10 - 80 People

60 m<sup>2</sup>



**EXPANDABLE DOUBLE** / 30

10 - 160 People

120 m<sup>2</sup>



**EXPANDABLE TRIPLE** / 34

10 - 240 People

180 m<sup>2</sup>



**SMART SPACE HOSPITALITY** / 52

1 - 100 People 23 m<sup>2</sup> - 33 m<sup>2</sup>



**BENCE SUITE HOSPITALITY** / 56

1 - 52 People 100 m<sup>2</sup>



**EXPANDABLE HOSPITALITY** / 60

10 - 80 People 60 m<sup>2</sup>



**EXPANDABLE FLEXIBLE HOSPITALITY** / 64

10 - 240 People up to 300 m<sup>2</sup>



**PREMIUM TOURER** / 68

50 - 350 People 50 m<sup>2</sup> - 400 m<sup>2</sup>



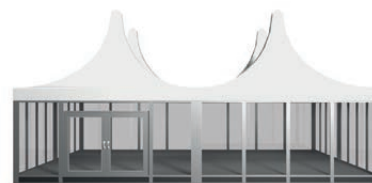
**EILA CUBE HOSPITALITY** / 74

50 - 400 People 480 m<sup>2</sup>



**CYCLONE SYSTEM** / 78

100 - 300 People 25 m<sup>2</sup> - 500 m<sup>2</sup>



**PAGODA SYSTEM** / 84

15 - 500 People 25 m<sup>2</sup> - 500 m<sup>2</sup>



**EILA EASY TOURER - BASIC** / 90

12 - 76 People 42 m<sup>2</sup> - 130 m<sup>2</sup>



**EILA EASY TOURER - EXCLUSIVE** / 96

10 - 120 People 125 m<sup>2</sup>



**TUBBO** / 102

5 - 100 People from 9 m<sup>2</sup>





1000+  
SATISFIED CUSTOMERS



Roadshows are unique brand experiences that you can bring directly to your customers anytime and anywhere in the world. Whether it's a workshop, product training and new product launch at the customer's premises, or a Brand Activation e.g. Experience as a mobile showroom event - you will not only save your customers a great deal of travel time, but will also benefit from a significantly higher visitor rate, more publicity and acceptance for your brand.

# ROADSHOW

Find your perfect promotion vehicle in our rental park.

- + Absolute unique alternative to exhibitions
- + Cost-efficient & sustainable
- + More time for your customers
- + Your multiflexible showroom is ready for use at any time

Small



Promo Tourer Light

1 - 6 People

p. 14

Medium



Glass Cube

40 People

p. 44

Large

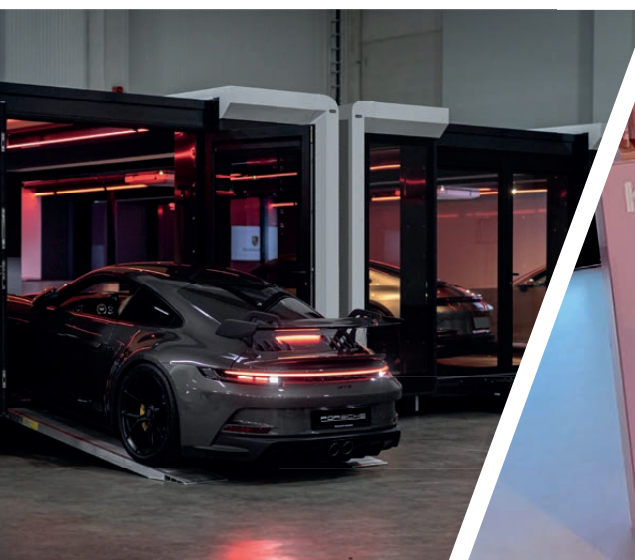


Expandable Triple

240 People

p. 34







# PROMO TOURER LIGHT



## PROFESSIONAL USE POSSIBLE WITH JUST ONE PERSON

This is the future of mobile presentation and roadshow areas! The Promo Tourer Light is a promotional vehicle that allows professional use with only one person within less than five minutes and may be driven without a special driver's license. The modern and high-quality design creates the perfect setting for all presentations, trainings and meetings.



1 – 6 People



9 m<sup>2</sup>



5 Minutes



### Time saving

Set up under 5 minutes



### Driver's license

Only driving license class B needed



### Cost efficient

Low personnel & transport efforts



### Individual configuration

Interior design & branding



### Environment friendly & sustainable

Fuel saving & low emission



### Representative appearance

Design & room concepts



**eila-Service:** Logistics and transport, Tour Management, Corporate Design & branding, Individual Interior Design & customer-specific configuration.



**Possible areas of use:** Roadshows, Trade fairs, Promotion, Product presentations, Mobile offices and more.









# PROMO TOURER 3.5



## PROFESSIONAL USE POSSIBLE WITH JUST ONE PERSON

This is what the future of mobile presentation and roadshow areas looks like! The Promo Tourer 3.5 doesn't only impress with its unique design, but with its two slide-outs, it also offers a generous amount of space and the highest level of comfort and luxury. A promotional vehicle that is the first to enable professional use with just one person in ten minutes and which can be driven without a special driver's licence. The modern and high-quality design creates the perfect setting for all presentations, training courses and meetings.



1 – 12 People



15 m<sup>2</sup>



10 Minutes



### Time saving

Setup under 10 minutes



### Driver's license

Only driving license class B needed



### Cost efficient

Low personnel & transport effort



### Individual configuration

Interior design & branding



### Environment friendly & sustainable

Fuel saving & low emission



### Representative appearance

Design & room concepts



**eila-Service:** Logistics and transport, Tour Management, Corporate Design & branding, Individual Interior Design & customer-specific configuration.



**Possible areas of use:** Roadshows, Trade fairs, Promotion, Product presentations, Mobile offices and more.









# SMART SPACE



## THE GROUNDBREAKING WORLD NOVELTY OF THE HOSPITALITY & ROADSHOW UNITS

The Smart Space is the cost-efficient and flexible innovation on the hospitality and roadshow market! In under 15 minutes the vehicle is put into operation by only one person. The Smart Space is transported inexpensively by car!



1 – 100 People



23 - 33 m<sup>2</sup>



15 Minutes



### Extremely cost efficient

Only one person necessary for setup



### Inexpensive logistics

Transport via car



### Quick assembly

Set-up in 15 minutes



### Modern technology

Autom. lifting rams & slide-outs



### Flexible power supply

Via port or generator



### Three vehicle sizes

From 23 m<sup>2</sup> up to 33 m<sup>2</sup>



**eila-Service:** Logistics and transport, Tour Management, Corporate Design & branding, Individual Interior Design & customer-specific configuration.



**Possible areas of use:** Roadshows, Promotion, Event marketing, Medical service, Motorsport events, Trade fairs, Product presentations, Corporate events, Special events, Conference space and more.









# EXPANDABLE SINGLE

## FUNCTIONAL AND UNIQUE DESIGN COMBINATION

The Expandable Flexible combines a unique design with maximum functionality. Quick and easy set-up, movable with conventional trucks and is lowered to the ground by four wirelessly controlled hydraulic cylinders – this creates ultimate accessibility at the push of a button. All trailers can be set up quickly by one person in less than 20 minutes. With the Expandable Trailer Hybrid you are guaranteed to have the perfect mobile solution for every presentation.



10 – 80 People



60 m²



From 20 Minutes



### Representative appearance

Design & room concepts



### Time saving

Fast assembly & disassembly



### Cost efficient

Low personnel & transport effort



### Individual configuration

Interior design & branding



### Safety

Failure protection & insurance



### Environment friendly & sustainable

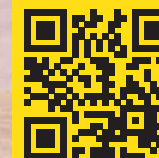
Resource-saving use



**eila-Service:** Logistics and transport, Tour Management, Corporate Design & branding, Individual Interior Design & customer-specific configuration.



**Possible areas of use:** Roadshow, Promotion, Event marketing, Medical service, Motorsport events, Trade fairs, Product presentations, Corporate events, Special events, Meeting conference rooms and more.









# EXPANDABLE DOUBLE

## FUNCTIONAL AND UNIQUE DESIGN COMBINATION

By adding another Expandable Hybrid, we can double the showroom space. Both units are connected with each other, so that a continuous area is created to present your products.



10 – 160 People



120 m<sup>2</sup>



From 60 Minutes



**Representative appearance**

Design & room concepts



**Time saving**

Fast assembly & disassembly



**Cost efficient**

Low personnel & transport effort



**Individual configuration**

Interior design & branding



**Safety**

Failure protection & insurance



**Environment friendly & sustainable**

Resource-saving use



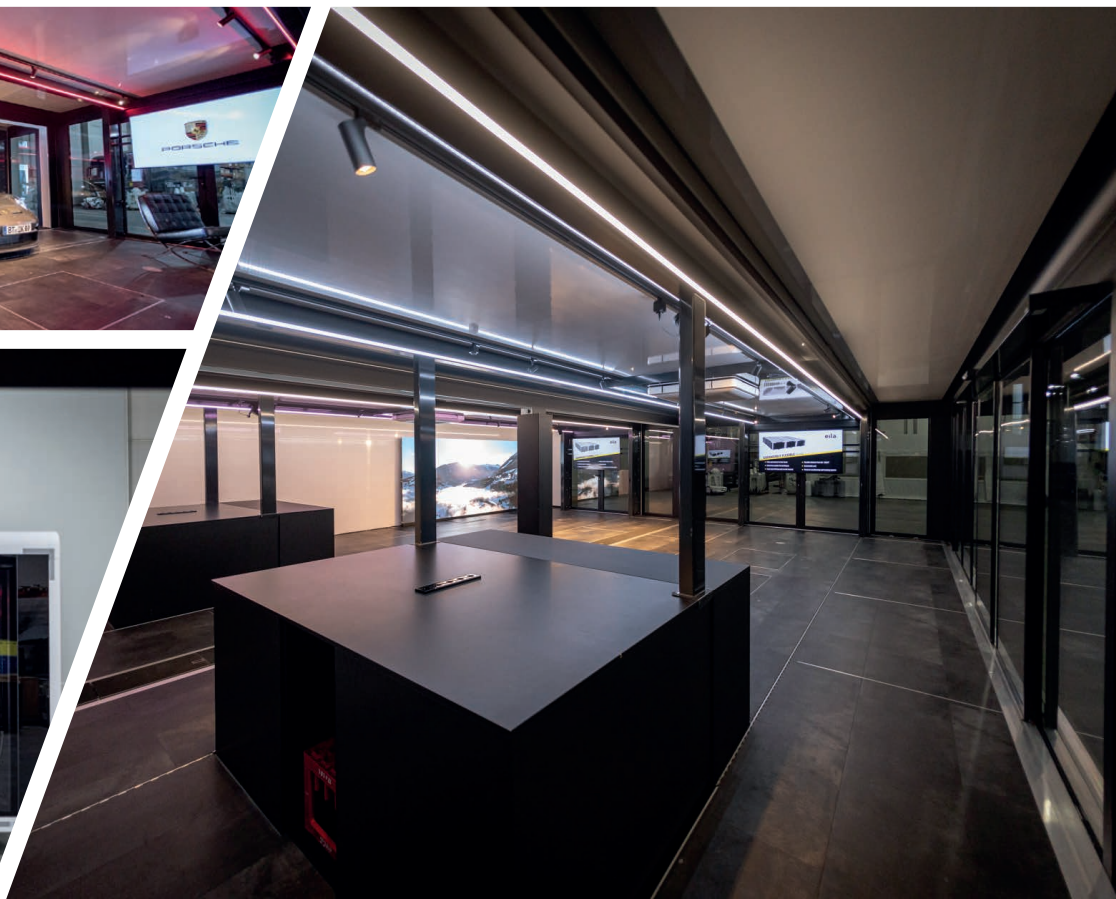
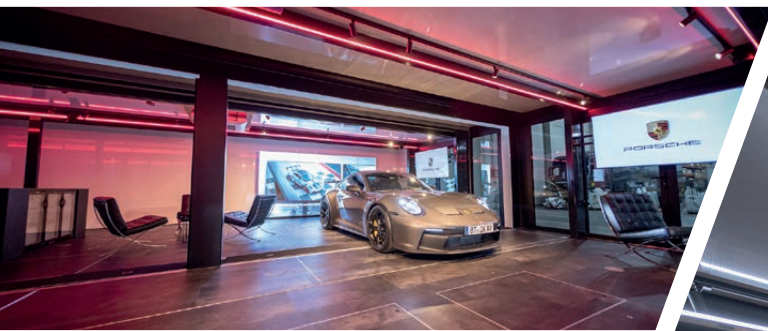
**eila-Service:** Logistics and transport, Tour Management, Corporate Design & branding, Individual Interior Design & customer-specific configuration.



**Possible areas of use:** Roadshow, Promotion, Event marketing, Medical service, Motorsport events, Trade fairs, Product presentations, Corporate events, Special events, Meeting conference room and more.









# EXPANDABLE TRIPLE

## FUNCTIONAL AND UNIQUE DESIGN COMBINATION

If the Expandable Double is connected with another Expandable Hybrid, a unique total area of 180 m<sup>2</sup> is created. Get an overview of the different sizes, colors and variations of the Expandable Flexible and configure a unit according to your wishes.



10 – 240 People



180 m<sup>2</sup>



From 120 Minutes



**Representative appearance**

Design & room concepts



**Time saving**

Fast assembly & disassembly



**Cost efficient**

Low personnel & transport effort



**Individual configuration**

Interior design & branding



**Safety**

Failure protection & insurance



**Environment friendly & sustainable**

Resource-saving use



eila.



**eila-Service:** Logistics and transport, Tour Management, Corporate Design & branding, Individual Interior Design & customer-specific configuration.



**Possible areas of use:** Roadshow, Promotion, Event marketing, Medical service, Motorsport events, Trade fairs, Product presentations, Corporate events, Special events, Meeting conference room and more.







# EXPANDABLE CONFIGURATOR

## Possible areas of use

Roadshow, Promotion, Event Marketing, Medical Service, Motorsport Events, Trade Fairs, Product Presentations, Corporate Events, Special Events, Meeting Conference Room and more.



SINGLE



10 - 80  
People



60 m²  
Area



20 Minutes  
Setup



DOUBLE



10 - 160  
People



120 m²  
Area



60 Minutes  
Setup



TRIPLE



10 - 240  
People



180 m²  
Area



120 Minutes  
Setup

People for setup

1 People

2 People

2 People

Setup time

20 Minutes

60 Minutes

120 Minutes

Dismantling time

20 Minutes

60 Minutes

120 Minutes

Electricity requirement

1 x 32 A

2 x 32 A

3 x 32 A



# EXPANDABLE CONTAINER

## TRANSPORTABLE WITH A NORMAL TRUCK

The Expandable Container has a total area of 32 m<sup>2</sup> after its complete assembly. The chassis is equipped with four twist locks so that the container can be easily and safely transported by a normal truck. Upon arrival, the Expandable Container is lowered to the ground by four wirelessly controlled hydraulic cylinders and is ready for use within a short time. You can fully customize and personalize the container inside and outside according to your requirements.



5 – 15 People



### Individual configuration

Interior design & branding



32 m<sup>2</sup>



### Time saving

Fast assembly & disassembly



From 20 Minutes



### Cost efficient

Low personnel & transport effort



### Environment friendly & sustainable

Resource-saving use



### Representative appearance

Design & room concepts



### Safety

Failure protection & insurance



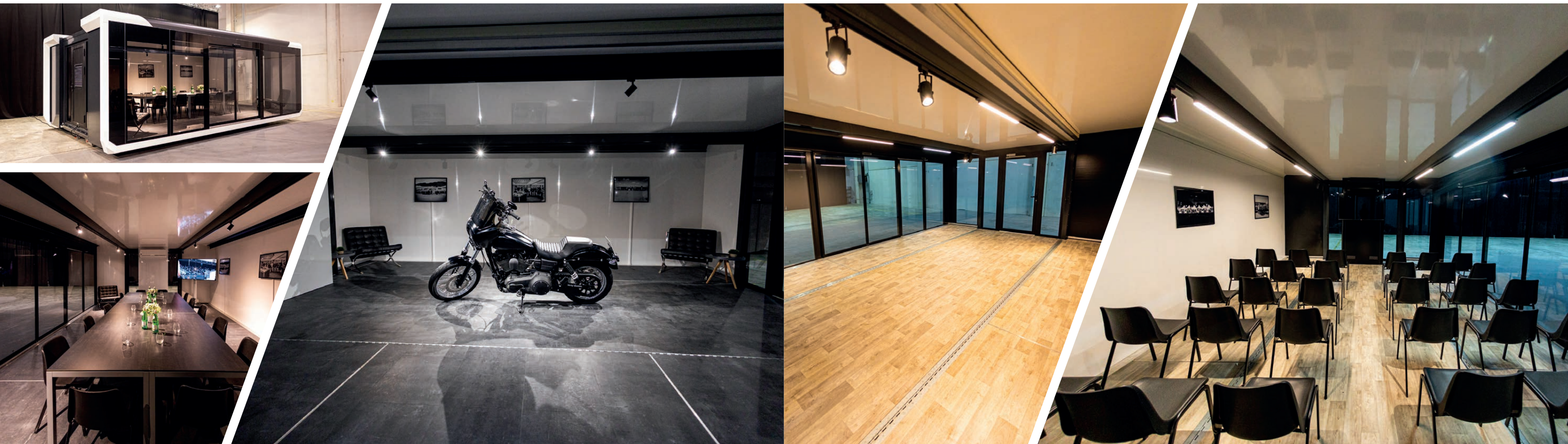
**eila-Service:** Logistics and transport, Tour Management, Corporate Design, branding, Individual Interior Design & customer-specific configuration.



**Possible areas of use:** Roadshow, Promotion, Event marketing, Medical service, Motorsport events, Trade fairs, Product presentations, Corporate events, Special events, Meeting conference room and more.









# GLASSCUBE



## STATE OF THE ART FOR THE PRESENTATION OF HIGH-QUALITY PRODUCTS

The Glasscube impresses with its functionality and first-class engineering. The two automatically extendable fold-outs create a generous amount of space in a very short time. Within three hours you can create an exclusive event space, which is an absolute eye-catcher thanks to the glazed fronts.



40 People



72 m²



2 Hours



### Autonomous vehicle

Without connection requirements



### Representative appearance

Panorama window fronts



### Time saving

Fast assembly & disassembly



### Cost efficient

Low personnel & transport effort



### Individual configuration

Interior design & branding



### Safety

Failure protection & insurance



**eila-Service:** Logistics and transport, Tour Management, Corporate Design & branding, Individual Interior Design & customer-specific configuration, Handling and approval for temporary structures.



**Possible areas of use:** Trade fairs, Motorsports, Special events, Product presentations, Show events, Training, Merchandise and more.









With over 500 successful events annually in more than 45 countries, eila is one of the world's market leaders in mobile event locations and hospitality events. With more than 70 units, the largest rental park in Europe is sure to have just the right mobile event location for any occasion. Whether hospitality or mobile event location, our rental park offers you the most diverse models in many different sizes and price ranges.

# MOBILE EVENT-LOCATIONS

Discover the unlimited possibilities of Europe's largest rental park.

- + One of a kind rental park
- + More than 500 events in over 45 countries each year
- + Full-service logistics and assembly
- + Flexible solutions
- + Large international network
- + Handling matters concerning insurance and authorities

Small



**Smart Space Hospitality** 1 - 100 People

p. 52

Medium



**Premium Tourer** 50 - 350 People

p. 68

Large



**eila cube Hospitality** 50 - 400 People

p. 74





# SMART SPACE HOSPITALITY



## THE GROUNDBREAKING WORLD NOVELTY OF THE HOSPITALITY & ROADSHOW UNITS

The Smart Space is the cost-efficient and flexible innovation on the hospitality and roadshow market! A unit with an unbeatable price-performance ratio. The unit can be individually adapted for projects of all kinds.



1 – 100 People



23 – 33 m<sup>2</sup>



15 Minutes



**Extremely cost efficient**  
Only one person necessary



**Inexpensive logistics**  
Transport via car



**Quick Assembly**  
Set-up in 15 minutes



**Modern technology**  
Autom. lifting rams & slide-outs



**Flexible power supply**  
Via port or generator



**Three vehicle sizes**  
From 23 m<sup>2</sup> up to 33 m<sup>2</sup>



**eila-Service:** Logistics and transport, Tour Management, Corporate Design & branding, Individual Interior Design & customer-specific configuration, Full catering equipment.



**Possible areas of use:** Roadshow, Event marketing, Promotion, Medical service, Motorsport events, Trade fairs, Product presentations, Special events, Corporate events, Meeting conference room and more.









# BENCE SUITE HOSPITALITY



## MOBILE AND COMPACT ALL-IN-ONE HOSPITALITY CONCEPT

Visionary design, innovative technology and the highest level of engineering - the Bence Suite is a turnkey hospitality that offers not only an unbeatable cost-benefit ratio, but also the highest level of comfort and luxury. With the generous amount of space, the and unique design, this event location with fully equipped gastro kitchen and exclusive guest room is the perfect solution for any event.



Up to 52 People



100 m<sup>2</sup>



3 Hours



### Individual configuration

Interior design & branding



### Time saving

Fast assembly & disassembly



### Cost efficient

Low personnel & transport effort



### Environment friendly

Resource-saving use



### Representative appearance

Design & room concepts



### Safety

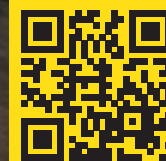
Failure protection & insurance



**eila-Service:** Logistics and transport, Tour Management, Corporate Design & branding, Individual Interior Design & customer-specific configuration, Full catering equipment.



**Possible areas of use:** Sports events, Motorsports, VIP and team hospitality, Trade fairs, Product launches, Corporate events, Special events, Pop-up restaurants and more.









# EXPANDABLE HOSPITALITY

## MAXIMUM FUNCTIONALITY AND UNIQUE DESIGN

We are very proud that eila is the official partner of Expandable throughout Germany. The Expandable Hybrid combines an innovative design with maximum functionality. Easy and fast setup, transport with conventional trucks and is lowered to the ground by four wirelessly controlled hydraulic cylinders - this creates ultimate accessibility at the push of a button. All units can be quickly set up by one person in less than 20 minutes. With this innovative patent, you are guaranteed to have the perfect mobile solution for any occasion.



10 – 80 People



62 m<sup>2</sup>



2 Hours



### Cost efficient

Low personnel & transport effort



### Individual configuration

Interior design & branding



### Time saving

Fast assembly & disassembly



### Safety

Failure protection & insurance



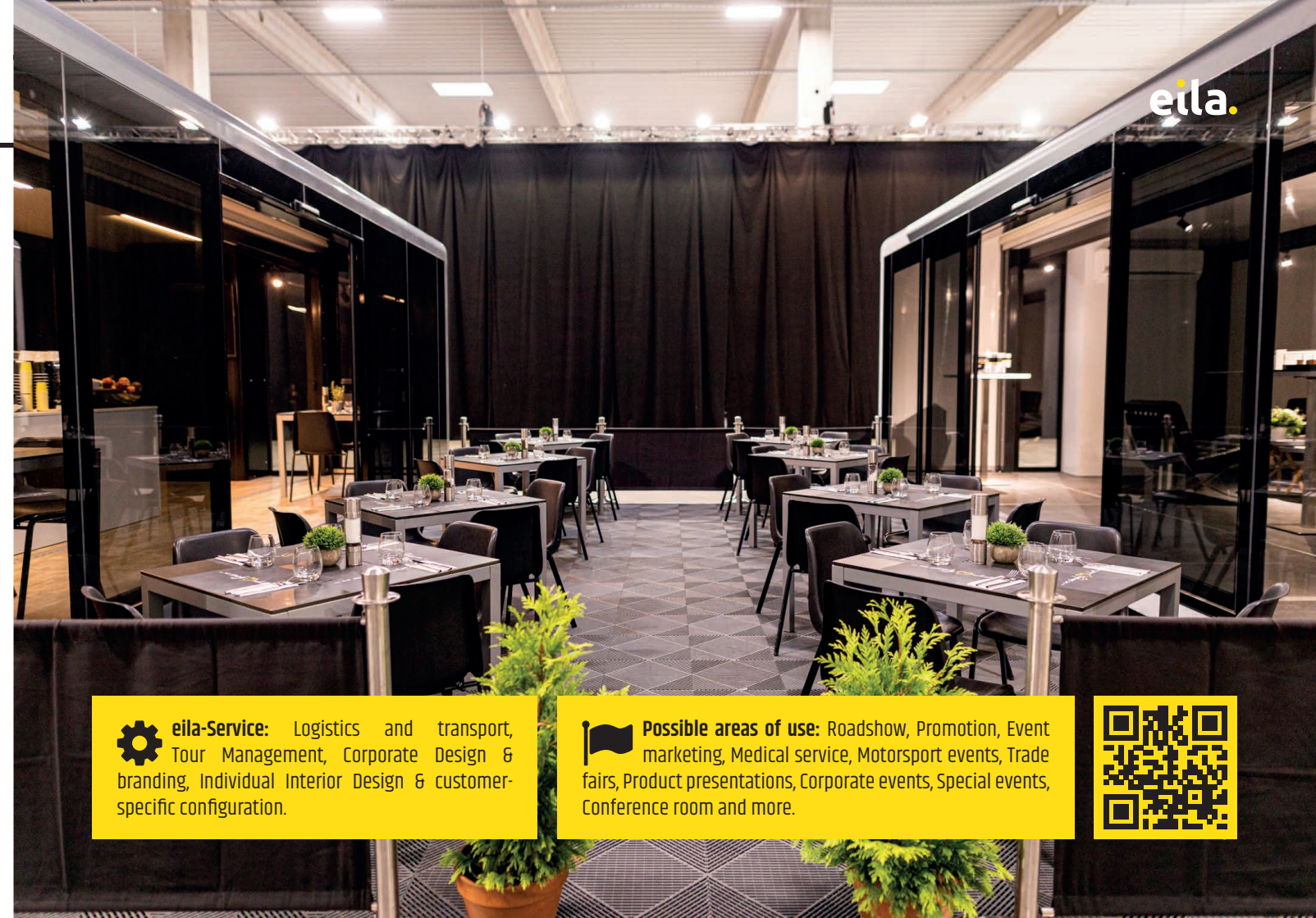
### Environment friendly & sustainable

Resource-saving use



### Representative appearance

Design & room concepts



**eila-Service:** Logistics and transport, Tour Management, Corporate Design & branding, Individual Interior Design & customer-specific configuration.



**Possible areas of use:** Roadshow, Promotion, Event marketing, Medical service, Motorsport events, Trade fairs, Product presentations, Corporate events, Special events, Conference room and more.









# EXPANDABLE FLEXIBLE HOSPITALITY

## MAXIMUM FUNCTIONALITY AND UNIQUE DESIGN

We are very proud that eila is the official partner of Expandable throughout all of Germany. The Expandable Flexible combines an innovative design with maximum functionality. The unit can be expanded with additional trailers and guarantees the perfect solution for your individual hospitality.



10 – 240 People



Up to 300 m²



4 Hours



### Cost efficient

Low personnel & transport effort



### Individual configuration

Interior design & branding



### Time saving

Fast assembly & disassembly



### Safety

Failure protection & insurance



### Environment friendly & sustainable

Resource-saving use



### Representative appearance

Design & room concepts



**eila-Service:** Logistics and transport, Tour Management, Corporate Design & branding, Individual Interior Design & customer-specific configuration.



**Possible areas of use:** Roadshow, Promotion, Event marketing, Medical service, Motorsport events, Trade fairs, Product presentations, Corporate events, Special events, Conference room and more.









# PREMIUM TOURER



## UNBEATABLE COST-BENEFIT RATIO AND MAXIMUM FLEXIBILITY

Visionary design, innovative technology and the highest engineering standards - the Premium Tourer is a patented all-in-one hospitality concept that offers not only an unbeatable cost-benefit ratio but also maximum flexibility. With its generous space, extensive full equipment and unique design, this turnkey event location with fully equipped gastronomy kitchen is the perfect solution for any event.



50 – 350 People



### Cost efficient

Low personnel & transport effort



50 m² up to 400 m²



### Representative appearance

Design & room concepts



1 – 3 Days



### Individual configuration

Interior design & branding



### Time saving

Fast assembly & disassembly



### Safety

Failure protection & insurance



### Environment friendly & sustainable

Resource-saving use

Customers references: ADAC, Bentley, Hyundai and many more.



**ella-Service:** Logistics and transport, Tour Management, Corporate Design & branding, Individual Interior Design & customer-specific configuration, Security service, Full catering equipment, Handling and permission for temporary structures.



**Possible areas of use:** Sports events, Motorsport events, VIP and team hospitality, Trade fairs, Product launches, Corporate events, Special events, Pop-up restaurants and more.









# PREMIUM TOURER



SIZE 2



32  
People



15 m x 7,5 m  
Area



1 Day  
Setup



SIZE 4



96  
People



15 m x 12,5 m  
Area



1,5 Days  
Setup



SIZE 6



144  
People



15 m x 17,5 m  
Area



2 Days  
Setup



SIZE 8



192  
People



15 m x 22,5 m  
Area



2 Days  
Setup



SIZE 8+



208  
People



15 m x 25 m  
Area



2,5 Days  
Setup

People for setup

4 People

6 People

8 People

10 People

10 People

Setup time

1 Day

1,5 Days

2 Days

2 Days

2,5 Days

Dismantling time

1 Day

1 Day

1,5 Days

1,5 Days

2 Days

Electricity requirement

6 x 32 A

6 x 32 A

6 x 32 A

6 x 32 A

10 x 32 A

# EILA CUBE HOSPITALITY



## PATENTED MULTILEVEL HOSPITALITY WITH UNIQUE DESIGN

The largest and most impressive hospitality in the eila rental park leaves nothing to be desired and convinces with a high recognition value and absolute functionality. On a comparatively small footprint, our Cube offers enough space for your team and your guests on two levels.



50 – 400 People



### Cost efficient

Low personnel & transport effort



480 m<sup>2</sup>



### Representative appearance

Design & room concepts



2 – 3 Days



### Individual configuration

Interior design & branding



### Time saving

Fast assembly & disassembly



### Safety

Failure protection & insurance



### Environment friendly & sustainable

Resource-saving use



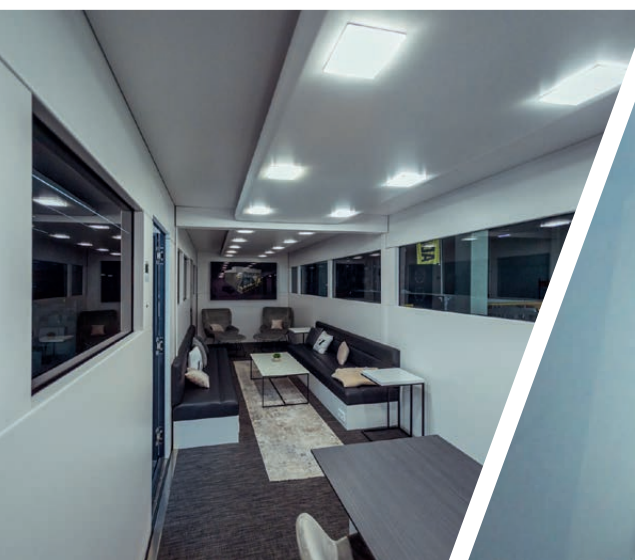
**eila-Service:** Logistics and transport, Tour Management, Corporate Design & branding, Individual Interior Design & customer-specific configuration, Security service, Full catering equipment, Handling and permission for temporary structures.



**Possible areas of use:** Sports events, Motorsport events, VIP and team hospitality, Trade fairs, Product launches, Corporate events, Special events, Pop-up restaurants and more.









# CYCLONE SYSTEM



## MAXIMUM FLEXIBILITY PAIRED WITH MODERN DESIGN

The Cyclone System enables you to have a cost-effective and representative appearance. The innovative design and the large window fronts create a spacious and open feeling of space. Regardless of branding, size or interior design, the Cyclone System can be perfectly adapted to your needs and your event. This mobile tent concept with a patented flat roof solution offers a high degree of flexibility paired with a modern design. Are you looking for the most cost-efficient and flexible unit possible? Then the Cyclone System is the right choice for you!



100 – 300 People



**Individual configuration**

Interior design & branding



**Cost efficient**

Low personnel & transport effort



25 m² up to 500 m²



**Time saving**

Fast assembly & disassembly



**Almost unlimited space**

Modular system



2 Days



**Representative appearance**

Design & room concepts



**Safety**

Failure protection & insurance

Customer references: Bentley, Brose, Eurosport, Opel and many more.



**eila-Service:** Logistics and transport, Tour Management, Corporate Design & branding, Individual Interior Design & customer-specific configuration, Security service, Full catering equipment, Handling and permission for temporary structures.



**Possible areas of use:** Motorsport, Sports events, VIP and team hospitality, Trade fairs, Product presentations, Corporate events, Special events and more.





## » CYCLONE SYSTEM // Mobile Eventlocations // Impressions





# CYCLONE SYSTEM

## POSSIBLE AREAS OF USE

Sporting events, motorsports, VIP and team hospitality, trade shows, product presentations, corporate events, special events and more.



SIZE 1



16  
People



5 m x 5 m



6 hours  
Setup



SIZE 2



32  
People



5 m x 10 m



1 Day  
Setup



SIZE 4



64  
People



10 m x 10 m



1,5 Days  
Setup



SIZE 6



96  
People



10 m x 15 m



2 Days  
Setup



SIZE 8



128  
People



10 m x 20 m



2,5 Days  
Setup

People for Setup

3 People

4 People

4 People

6 People

8 People

Setup time

6 Hours

1 Day

1,5 Days

2 Days

2,5 Days

Dismantling time

4 Hours

8 Hours

1 Day

1,5 Days

1,5 Days

Electricity requirement

1 x 32 A

1 x 32 A

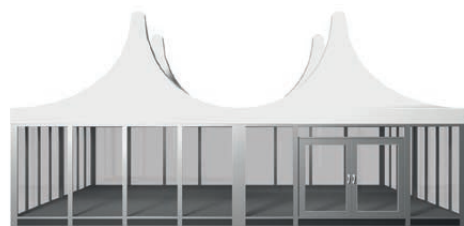
2 x 32 A

3 x 32 A

4 x 32 A



# PAGODA SYSTEM



## MAXIMUM COST EFFICIENCY AND SPATIAL SCALABILITY

The Pagoda System enables you to present your event in a cost-effective and representative manner. The innovative design and the large window fronts create a spacious and open feeling. Regardless of whether it is branding, size or interior design, the Pagoda System can be perfectly adapted to your needs and your event. This mobile tent solution offers the highest level of cost efficiency and spatial scalability paired with a modern design. The right location for every event size.



15 – 500 People



### Time saving

Fast assembly & disassembly



### Individual configuration

Interior design & branding



25 m<sup>2</sup> up to 500 m<sup>2</sup>



### Representative appearance

Design & room concepts



### Safety

Failure protection & insurance



2 Days



### Cost efficient

Low personnel & transport effort



### Almost unlimited space

Modular system

Customer references: ADAC, BMW, Opel, Suzuki and many more.



**eila-Service:** Logistics and transport, Tour Management, Corporate Design & branding, Individual Interior Design & customer-specific configuration, Security service, Full catering equipment, Handling and permission for temporary structures.



**Possible areas of use:** Sports events, Motorsports events, VIP and team hospitality, Trade fairs, Product launches, Corporate events, Special events.





## » PAGODA SYSTEM // Mobile Eventlocations // Impressions





# PAGODA SYSTEM

## POSSIBLE AREAS OF USE

Sporting events, motorsports, VIP and team hospitality, trade shows, product presentations, corporate events, special events and more.



SIZE 1



16  
People



5 m x 5 m



3 Hours



SIZE 2



32  
People



5 m x 10 m



5 Hours



SIZE 4



64  
People



10 m x 10 m



1 Day  
Setup



SIZE 6



96  
People



10 m x 15 m



1,5 Days  
Setup



SIZE 8



128  
People



10 m x 20 m



2 Days  
Setup

People for Setup

2 People

2 People

4 People

6 People

8 People

Setup time

3 Hours

5 Hours

1 Day

1,5 Days

2 Days

Dismantling time

2 Hours

3 Hours

5 Hours

1 Day

1,5 Days

Electricity requirement

1 x 32 A

1 x 32 A

2 x 32 A

3 x 32 A

4 x 32 A



# EILA EASY TOURER – BASIC



## HOSPITALITY WITH GUEST ROOM AND FULLY EQUIPPED KITCHEN

This patented all-in-one hospitality tent concept with guest room and fully equipped kitchen offers maximum cost efficiency and spatial scalability. The unit features a unique modular system and can be customized within a very short time. Whether branding, size or interior fittings: the eila easy tourer basic can be perfectly adapted to your needs and your event.



12 – 76 People



42 – 130 m²



4 Hours



**Individual configuration**  
Interior design, branding & size



**Time saving**  
Fast assembly & disassembly



**Cost efficient**  
Low personnel & transport effort



**Unlimited space**  
Modular system



**Equipment**  
High quality gastro kitchen



**Safety**  
Failure protection & insurance

Customer references: BMW, Opel, Tour de Swiss, M-Sport and many more.



**eila-Service:** Logistics and transport, Tour Management, Corporate Design, branding, Individual Interior Design & customer-specific configuration, Security service, Full catering equipment.



**Possible areas of use:** Sports events, Motor-sport Events, VIP and team hospitality, Trade fairs, Product launches, Corporate events, Special events, Pop-up restaurants and more.





## » EILA EASY TOURER – BASIC // Mobile Eventlocations // Impressions





# EILA EASY TOURER – BASIC

## POSSIBLE AREAS OF USE

Sporting events, motorsports, VIP and team hospitality, trade shows, product presentations, corporate events, special events and more.



SMALL



12  
People



6,5 m x 9 m  
Area



1/2 day  
Setup



MEDIUM



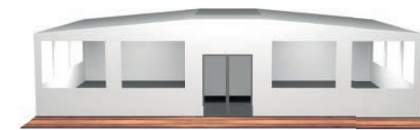
18  
People



8,5 m x 9 m  
Area



1/2 Day  
Setup



LARGE



76  
People



8,5 m x 15,5 m  
Area



1 Day  
Setup

People for Setup

2 People

2 People

2 People

Setup time

1/2 Day

1/2 Day

1 Day

Dismantling time

1/4 Day

1/2 Day

1/2 Day

Electricity requirement

2 x 32 A

2 x 32 A

2 x 32 A



# EILA EASY TOURER – EXCLUSIVE



## INDIVIDUAL SIZE ADJUSTMENT DEPENDING ON THE NUMBER OF GUESTS

The eila Easy Tourer Exclusive allows you to create a cost-efficient as well as representative appearance for your event. The unit features a unique modular system and can be customized within a very short time. Whether it's branding, size or interior design, the eila Easy Tourer Exclusive can be perfectly adapted to your needs and your event. This patented all-in-one hospitality tent concept offers maximum cost efficiency and spatial scalability.



12 – 120 People



### Time saving

Fast assembly & disassembly



### Safety

Failure protection & insurance



125 m<sup>2</sup>



### Cost efficient

Low personnel & transport effort



### Unlimited space

Modular system



1 Day



### Individual configuration

Interior design, branding & size



### Representative appearance

Design & room concepts

Customer references: BMW, Opel, Tour de Swiss, M-Sport and many more.



**eila-Service:** Logistics and transport, Tour Management, Corporate Design & branding, Individual Interior Design & customer-specific configuration, Security service, Full catering equipment.



**Possible areas of use:** Sports events, Motorsport events, VIP and team hospitality, Trade fairs, Product launches, Corporate events, Special events, Pop-up restaurants and more.





» EILA EASY TOURER – EXCLUSIVE // Mobile Eventlocations // Impressions





# EILA EASY TOURER – EXCLUSIVE

## POSSIBLE AREAS OF USE

Sporting events, motorsports, VIP and team hospitality, trade shows, product presentations, corporate events, special events and more.



SMALL



12  
People



6,5 m x 9 m  
Area



1/2 Day  
Setup



MEDIUM



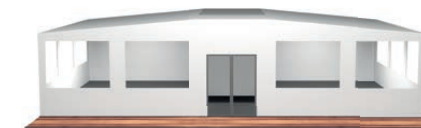
26  
People



8,5 m x 9 m  
Area



1 day  
Setup



LARGE



92  
People



8,5 m x 15,5 m  
Area



1,5 Days  
Setup

People for Setup

2 People

2 People

3 People

Setup time

1/2 Day

1 Day

1,5 Days

Dismantling time

1/2 Day

1/2 Day

1 Day

Electricity requirement

2 x 32 A

2 x 32 A

2 x 32 A



# TUBBO



## FLEXIBLE OUTDOOR-EVENTLOCATION — INDEPENDENT OF THE TERRAIN

With the Tubbo, you can create an impressive event location on any outdoor surface - regardless of the terrain, available space or weather. The Tubbo allows you to make a cost-efficient as well as prestigious appearance. The innovative design and panoramic windows create a spacious and open feeling. This mobile event solution offers maximum flexibility, coupled with modern design. The Tubbo is an absolute eye-catcher for every event.



5 – 100 People



from 9 m²



from 4 hours



### Flexible space

Modular system



### Time saving

Fast assembly & disassembly



### Cost efficient

Low maintenance costs



### Low maintenance costs

Outdoor area usable all year round



### Representative appearance

Design & room concepts



### Safety

Failure protection & insurance



**eila-Service:** Logistics and transport, Assembly and dismantling, Full-service support.



**Possible areas of use:** Restaurants, Bars, Spas, Sunrooms, Chill out & Smoking areas, Usable space expansions events, Showrooms, Info points, Conference rooms and more.





» **TUBBO** // Mobile Eventlocations // Impressions

---





# digital

106

eila.

EXPERIENCE THE WORLD OF EILA »

The complete eila collection is available both as a download via the QR code above and free of charge on our website. For digital use, you can access our fleet online with just one click. Send the collection conveniently to your team.

WWW.EILA.DE



Get the eila  
collection



scan<sup>and</sup>  
download

COLLECTION DIGITAL

107





- » MOBILE EVENTLOCATIONS
- » ROADSHOW



eila GmbH & Co. KG  
Logistikpark 7a  
D - 95448 Bayreuth

fon +49 (0)921-959 230 00  
info@eila.de  
www.eila.de